

TIVOLI
ILOVIT



SSANGYONG



[Special offers](#)[Book a test drive](#)[Find your local dealer](#)[Build your Tivoli](#)

Tivoli get ready to love it...

Are you ready for Tivoli? It's not the run of the mill SUV. This is SsangYong. This is Korean. So it's a little bit different and a little bit special. But if you're different and you're special, this could be the dynamic urban SUV for you.

[Exterior](#)[Interior
& connectivity](#)[Drivetrain](#)[Safety](#)[Models
& colours](#)[Equipment
& data](#)[Accessories](#)[Aftersales](#)

[Special offers](#)[Book a test drive](#)[Find your local dealer](#)[Build your Tivoli](#)

Space & refinement redefined

Tivoli has all the bold and powerful dynamics of an SUV, yet that sleek and stylish bodyline looks unmistakeably urban and cool. It's the smart choice for today's active lifestyle, whether you're young or young at heart.

[Exterior](#)[Interior
& connectivity](#)[Drivetrain](#)[Safety](#)[Models
& colours](#)[Equipment
& data](#)[Accessories](#)[Aftersales](#)

[Special offers](#)[Book a test drive](#)[Find your local dealer](#)[Build your Tivoli](#)

Distinctive by design

Tivoli's design takes its inspiration from nature. The lines are sleek, dignified, and dynamic. Those head-turning good looks are designed to stand out from run of the mill SUVs.



Projector headlamps

Sparkling, crystal clear projector headlights are purposeful and powerful with 'always-on' Daytime Running capability, illuminating a row of 11 high-brightness LEDs above each of the headlamps.



Door mirrors

See at a glance what's going on behind. The door mirrors perfectly reflect the Tivoli aesthetic. They're electrically controlled and can fold away neatly when not in use.



LED fog lamps

The dynamic LED front fog lamps look stunning in a contemporary integrated triple stack.

[Exterior](#)[Interior
& connectivity](#)[Drivetrain](#)[Safety](#)[Models
& colours](#)[Equipment
& data](#)[Accessories](#)[Aftersales](#)

[Special offers](#)[Book a test drive](#)[Find your local dealer](#)[Build your Tivoli](#)

Urban, dynamic & versatile

Captured from the rear, Tivoli boasts a powerful, bold, confident stance which is unmistakably SUV. Those dynamic, edgy lines promise latent performance. And fun.



Rear spoiler

The aerodynamically efficient rear spoiler combines form and function with an auxiliary brake light.



LED rear cluster

The eco-efficient rear LED clusters, artfully combine directional indicator, tail lamps and stop lights to finish off the stylish look.

[Exterior](#)[Interior
& connectivity](#)[Drivetrain](#)[Safety](#)[Models
& colours](#)[Equipment
& data](#)[Accessories](#)[Aftersales](#)

[Special offers](#)[Book a test drive](#)[Find your local dealer](#)[Build your Tivoli](#)

Inside information

There's a Korean phrase, 'Noon-Chi' which has no direct translation. It means being in touch with the feelings of others and in harmony with your environment. It's all about maximising pleasure from the driving experience. The award-winning seats are comfortable, spacious and welcoming; the lofty driving position puts you in total control with controls which are instinctive and easily within reach.

[Exterior](#)[Interior
& connectivity](#)[Drivetrain](#)[Safety](#)[Models
& colours](#)[Equipment
& data](#)[Accessories](#)[Aftersales](#)

[Special offers](#)[Book a test drive](#)[Find your local dealer](#)[Build your Tivoli](#)

You're in the driving seat

The heated front seats are fashioned for relaxation and offer support where it's needed. Cocooned in a comfortable cabin, protected from the outside elements, Tivoli means staying fresh and alert on even the longest journey.



Dual zone air-con

Everyone is individual. You may want to turn the heat up whilst your passenger stays cool. Dual zone. Joint decision. Perfect harmony.



Heated steering wheel

When it's cold outside there's nothing more warming than the comfortable touch of a heated steering wheel.



Heated front seats

Greater comfort on cold, wintry days. Sit back, settle down and enjoy the ride.

[Exterior](#)[Interior
& connectivity](#)[Drivetrain](#)[Safety](#)[Models
& colours](#)[Equipment
& data](#)[Accessories](#)[Aftersales](#)

[Special offers](#)[Book a test drive](#)[Find your local dealer](#)[Build your Tivoli](#)

Ultimate interface

You'll love the refinement. There's not just one but two digital displays. One is a dedicated 9" multi-functional infotainment unit, the other is a 10.25" digital cluster that can be formatted to suit you, linking with the infotainment unit to provide a range of options.



Digital instruments with in-cluster navigation

Full digital display with modern graphics and traffic sign recognition.



Analogue style instruments with turn by turn navigation

The simplest, most straightforward way to get there in style.



Analogue style instruments with in-cluster navigation

See everything that's most important to you, dials on the outside, navigation in the centre.

[Exterior](#)[Interior
& connectivity](#)[Drivetrain](#)[Safety](#)[Models
& colours](#)[Equipment
& data](#)[Accessories](#)[Aftersales](#)

[Special offers](#)[Book a test drive](#)[Find your local dealer](#)[Build your Tivoli](#)

Make the sound choice

Tivoli will keep you on track and play all your latest tracks too. Dual displays link you up to navigate the outside world, while Google Android Auto and Apple CarPlay keep you connected to enjoy your sounds. There's even a rear view camera as standard.



8" screen smart audio

An 8" touchscreen controls DAB radio, Apple CarPlay or Google Android Auto connect your smartphone to the car, or use Bluetooth connectivity, or a handy USB.



9" HD Navigation

Features a high definition 9" screen, DAB radio, TomTom® Navigation, Apple CarPlay or Google Android Auto to play your favourite podcasts or tracks whilst keeping you on track.



Google Android Auto and Apple CarPlay*

No need to look down at your phone. It's all on-screen. Access invaluable apps and enjoy your music library whilst on the move.

[Exterior](#)[Interior
& connectivity](#)[Drivetrain](#)[Safety](#)[Models
& colours](#)[Equipment
& data](#)[Accessories](#)[Aftersales](#)

[Special offers](#)[Book a test drive](#)[Find your local dealer](#)[Build your Tivoli](#)

Room to relax

Inside, there's plenty of room to manoeuvre. Upfront, there's a lofty view of the road, whilst the generous dimensions give even more shoulder room. In the back there's class-leading legroom plus a 27.5 degree recline to add even more space and comfort.

[Exterior](#)[Interior
& connectivity](#)[Drivetrain](#)[Safety](#)[Models
& colours](#)[Equipment
& data](#)[Accessories](#)[Aftersales](#)

[Special offers](#)[Book a test drive](#)[Find your local dealer](#)[Build your Tivoli](#)

Space for any active lifestyle



Whatever your bag, Tivoli has got what it takes. Flexibility is built in so you can configure the load space and the second row to suit your needs. With 427 litres, it's the only SUV in its class big enough to carry 3 sets of golf clubs.



2nd row 40% folded



2nd row 60% folded



2nd row fully folded



Retractable Luggage cover

Durable, retractable and stylish. Gives you added cargo space as a parcel shelf and peace of mind when hiding valuables.

[Exterior](#)[Interior
& connectivity](#)[Drivetrain](#)[Safety](#)[Models
& colours](#)[Equipment
& data](#)[Accessories](#)[Aftersales](#)

[Special offers](#)[Book a test drive](#)[Find your local dealer](#)[Build your Tivoli](#)

Intelligent storage

To be truly comfortable on any journey you need to know that there's the perfect space for everything you need. Our intelligent storage systems create space in the most ingenious places.



Luggage board

A smart 'luggage board' provides a flat floor plus a hidden compartment where you can put high value items around the edge of the spare wheel.



Overhead sunglasses storage

Spacious glove box

Large capacity door map pockets

New centre armrest with storage

Now, where did I put my sunglasses?

Need a space for sunglasses? It's above you. Need somewhere for your water bottle? It's beside you. And there are places for laptops, maps and travel documents too.

[Exterior](#)[Interior
& connectivity](#)[Drivetrain](#)[Safety](#)[Models
& colours](#)[Equipment
& data](#)[Accessories](#)[Aftersales](#)

[Special offers](#)[Book a test drive](#)[Find your local dealer](#)[Build your Tivoli](#)

Finishing touches

Little things mean a lot. Tivoli encapsulates the forensic attention to detail that is found throughout Korea. Nothing is too small to care about. Everything has to be perfect to the touch.



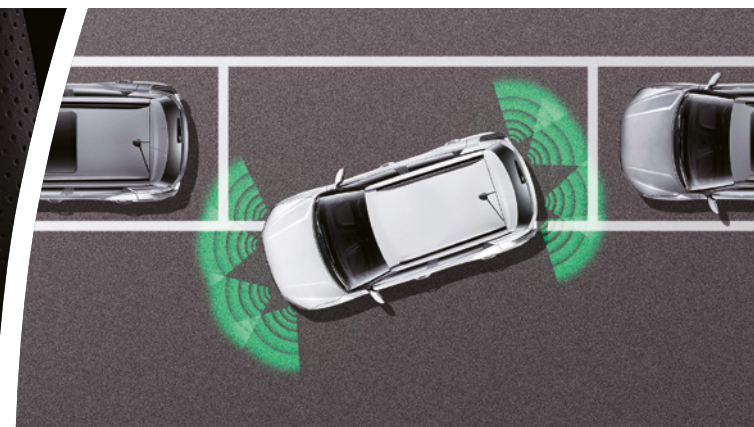
Start button

Tivoli is ready to go. A deft touch of the power start button and the response is immediate.



Cruise control

Steering wheel mounted controls allow the driver to maintain a set speed without touching the accelerator.



Parking sensors

Ultimate models feature front and rear parking sensors to add audible assistance to parking in tight spaces.



Smart key system

Once the key fob is detected the driver's door can be opened with a button and the car started by push button allowing the fob to stay in your pocket or bag.

[Exterior](#)[Interior
& connectivity](#)[Drivetrain](#)[Safety](#)[Models
& colours](#)[Equipment
& data](#)[Accessories](#)[Aftersales](#)

[Special offers](#)[Book a test drive](#)[Find your local dealer](#)[Build your Tivoli](#)

Instantly available power

Every SsangYong engine unit offers readily available power from the off. There's smooth powerful delivery whenever you want it. Every engine offers eco-friendly efficiency and all-important fuel economy.



1.5 Petrol GDI-Turbo

Pushing out 280Nm of peak torque at 1500-4500 rpm, the quiet, smooth-running 1.5 GDI-Turbo delivers best in class performance for a dynamic, exhilarating driving experience.

Max Power

163_{ps}

5,500rpm

Max Torque

280_{Nm}

1,500-4,000rpm
(with MT)



Idle Stop & Go

ISG temporarily stops the engine when the vehicle comes to a halt. It's the smart and efficient way to increase fuel economy and reduce exhaust emissions.



Drive mode system

The automatic transmission features selectable drive modes (NORMAL / SPORT / WINTER) for safe driving and a customizable driving experience. Normal mode balances the need for economy and power. Sport delivers extra power and Winter starts the car in 2nd gear to prevent slippage when icy.



Aisin 6-speed automatic transmission

Fitted on some of the finest cars in the world, the tested and proven AISIN 6-speed automatic offers smooth and quiet gear shifting with maximum fuel efficiency.



6-speed manual transmission

The 6-speed manual gearbox delivers a fun driving experience with maximum driver engagement. Optimized gear ratios ensure smooth, and precise gear shifts, improved fuel efficiency and a quieter ride.

[Exterior](#)[Interior
& connectivity](#)[Drivetrain](#)[Safety](#)[Models
& colours](#)[Equipment
& data](#)[Accessories](#)[Aftersales](#)

[Special offers](#)[Book a test drive](#)[Find your local dealer](#)[Build your Tivoli](#)

Protecting you & your loved ones

This is the safest and strongest Tivoli ever. Safety is built in – from the body up, with a best in class body structure composed of 74% high tensile strength steel. We've also fitted 7 air bags in case you run into trouble - or trouble runs into you.



High Tensile-Strength Steel

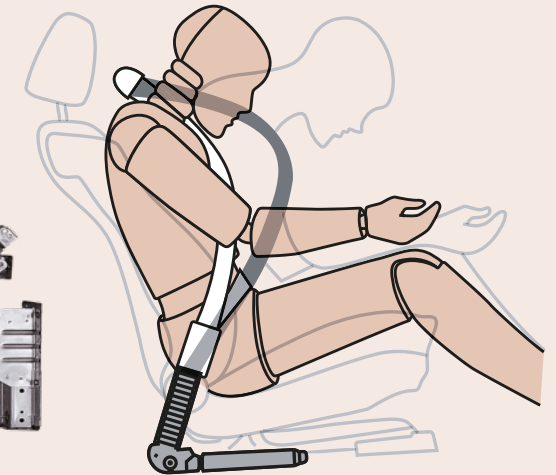
At SsangYong, safety begins with the production of the body structure. For higher chassis rigidity and safety, the body is built with Hot Press Foaming and advanced high tensile strength steel.

ISOFIX

Tivoli is equipped with ISOFIX child seat mountings to the rear outer seats to allow firm and rigid attachment.

7 Airbags

Tivoli builds upon its safety focus, boasting 7 airbags for passenger safety – the most in its class, with one solely protecting the driver's knees and legs. It's not surprising that Tivoli has been awarded a 4-star NCAP safety rating.



Seatbelt Pre-tensioners

In the event of a collision, the pre-tensioner immediately tightens the seatbelt over the chest and lap, ensuring the occupant is in the best possible restrained position if the airbags are deployed.

[Exterior](#)[Interior
& connectivity](#)[Drivetrain](#)[Safety](#)[Models
& colours](#)[Equipment
& data](#)[Accessories](#)[Aftersales](#)

[Special offers](#)[Book a test drive](#)[Find your local dealer](#)[Build your Tivoli](#)

Safety first & foremost

Safety is our primary concern. For you, for your loved ones and for others on the road. Our continuously growing toolkit of advanced driving safety measures includes Autonomous Emergency Braking System, Lane-Keeping Assist and Lane Departure Warning System.



Front Collision Warning

Alerts the driver when another vehicle or pedestrian appears in the path of the car.



Lane Departure Warning System

Notifies the driver when the forward camera module detects an unintended lane departure by the vehicle.



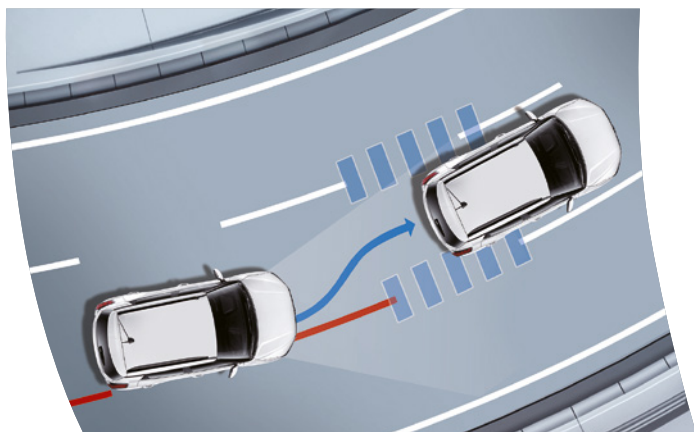
High Beam Assist

By monitoring the headlights of oncoming vehicles and the rear combination lamps of the vehicles ahead, HBA analyzes ambient light levels to automatically switch between high and low beams.



Autonomous Emergency Braking System

When a frontal collision is anticipated, this function automatically applies the brakes to prevent a collision.



Lane Keeping Assist

Front camera helps prevent unintended lane departure by making a corrective steering adjustment.



Driver Attention Alert

Automatically alerts the driver when time at the wheel has exceeded safe limits.

[Exterior](#)[Interior
& connectivity](#)[Drivetrain](#)[Safety](#)[Models
& colours](#)[Equipment
& data](#)[Accessories](#)[Aftersales](#)

[Special offers](#)[Book a test drive](#)[Find your local dealer](#)[Build your Tivoli](#)

Ventura

Great refinement, high spec and crammed with special touches. Reversing camera, heated leather steering wheel plus Apple CarPlay and Google Android Auto.



- 1.5L petrol GDi-T engine
- Air conditioning
- Remote keyless entry
- Cruise control
- Smart steering
- 16" alloy wheels
- TPU leather look & cloth seats
- Heated front seats
- 8" touchscreen DAB radio with iPod & Bluetooth connectivity
- Apple CarPlay and Google Android Auto

- Reversing camera
- Heated leather steering wheel
- Height adjustable driver's seat
- Rear parking sensors
- Automatic headlights
- Rain sensing wipers
- Automatic dipping rear view mirror
- Front Fog lights
- Smart key with push button entry
- Push button start
- Luggage cover

- Roof Rails
- 7 airbags

Smart safety features:

- Autonomous Emergency Braking
- Forward Collision Warning
- Lane Keeping Assist
- Lane Departure Warning
- High Beam Assist
- Traffic Sign Recognition

[Exterior](#)[Interior
& connectivity](#)[Drivetrain](#)[Safety](#)[Models
& colours](#)[Equipment
& data](#)[Accessories](#)[Aftersales](#)

[Special offers](#)[Book a test drive](#)[Find your local dealer](#)[Build your Tivoli](#)

Ultimate

Above and beyond. Ultimate is in a class of its own and comes with the very highest level of spec. Leather covered, heated steering wheel and 18" gun metal alloy wheels.



As Ventura spec +

- 18" diamond cut alloy wheels
- Leather seats
- 10.25" LCD supervision cluster
- Dual zone auto aircon
- Power folding door mirrors
- European tuned suspension
- Triple LED front fog lights
- Front parking sensors
- Rear spoiler
- Rear privacy glass

Ultimate Nav spec

As Ultimate spec +

- 9" HD touchscreen
- TomTom® navigation

[Exterior](#)[Interior
& connectivity](#)[Drivetrain](#)[Safety](#)[Models
& colours](#)[Equipment
& data](#)[Accessories](#)[Aftersales](#)

[Special offers](#)[Book a test drive](#)[Find your local dealer](#)[Build your Tivoli](#)

Colours & interiors

The Tivoli comes in a range of stunning colours. Grand White, Platinum Grey and Cherry Red are all available with the Dark Grey interior option, while Dandy Blue and Space Black are available with the Light Grey interior option.



Grand White



Platinum Grey



Cherry Red



Space Black



Dandy Blue

Dark Grey



Light Grey



Leather
Seats



Leather
Seats



TPU Leather Look
& Cloth Seats

[Exterior](#)[Interior
& connectivity](#)[Drivetrain](#)[Safety](#)[Models
& colours](#)[Equipment
& data](#)[Accessories](#)[Aftersales](#)

[Special offers](#)[Book a test drive](#)[Find your local dealer](#)[Build your Tivoli](#)

Standard equipment

✓ Standard ⊗ N/A

CONVENIENCE	VENTURA	ULTIMATE	ULTIMATE NAV
10.25" High resolution LCD supervision cluster	⊗	✓	✓
Remote keyless entry	✓	✓	✓
Dual smart keys with start button	✓	✓	✓
Automatic door locking system	⊗	✓	✓
Trip computer with outside temperature gauge	✓	✓	✓
Electric windows (front & rear)	✓	✓	✓
Automatic headlamps	✓	✓	✓
Rain sensing wipers	✓	✓	✓
Automatic dipping rear view mirror	✓	✓	✓
Idle Stop & Go system	✓	✓	✓
Smart steering (manual transmission)	✓	✓	✓
Drive mode (automatic transmission)	⊗	✓	✓
Height & reach adjustable steering wheel	✓	✓	✓
Electronic Cruise Control	✓	✓	✓
Headlight levelling system	✓	✓	✓
Electrically operated & heated door mirrors	✓	✓	✓
Automatic power folding door mirrors	⊗	✓	✓
60/40 split rear seats	✓	✓	✓
Luggage cover	✓	✓	✓
Luggage board/loadspace partition	⊗	✓	✓
Contour floor mats	✓	✓	✓
CLIMATE AND HEATING			
Manual air conditioning	✓	⊗	⊗
Dual-zone automatic air conditioning	⊗	✓	✓

[Exterior](#)[Interior
& connectivity](#)[Drivetrain](#)[Safety](#)[Models
& colours](#)[Equipment
& data](#)[Accessories](#)[Aftersales](#)

[Special offers](#)[Book a test drive](#)[Find your local dealer](#)[Build your Tivoli](#)**SAFETY AND SECURITY****VENTURA****ULTIMATE****ULTIMATE NAV**

Dual front airbags with passenger off switch



Side airbags



Curtain airbags



Driver's knee airbag



Two stage front seatbelt pre-tensioners



Electronic Stability Programme (ESP)



Active Rollover Protection (ARP)



ABS with Electronic Brakeforce Distribution (EBD)



Brake Assist System (BAS)



Forward Collision Warning (FCW)



Autonomous Emergency Braking (AEB)



Lane Departure Warning (LDW)



Lane Keeping Assist (LKA)



Traffic Sign Recognition (TSR)



Driver Attention Alert (DAA)



Front Vehicle Start Alert (FSVA)



Emergency Stop Signal (ESS)



Hill Start Assist (HSA)



Hill Descent Control (HDC)



Safety Distance Alert (SDA)



ISOFIX fittings to outer rear seats



Alarm & immobiliser



Automatic speed sensing door locks

**IN CAR ENTERTAINMENT**

8" touchscreen DAB radio with iPod & Bluetooth connectivity



9" HD touchscreen with TomTom® navigation



Apple CarPlay and Google Android Auto



Rear view camera



USB and AUX sockets



Steering wheel mounted audio controls



Six speakers including two tweeters



Roof mounted antenna

[Exterior](#)[Interior
& connectivity](#)[Drivetrain](#)[Safety](#)[Models
& colours](#)[Equipment
& data](#)[Accessories](#)[Aftersales](#)

[Special offers](#)[Book a test drive](#)[Find your local dealer](#)[Build your Tivoli](#)**COMFORT****VENTURA****ULTIMATE****ULTIMATE NAV**

TPU leather look & cloth seats



Leather seats



Height adjustable driver's seat



Front seat warmers



Heated steering wheel



Stainless steel front door kick plates



Leather covered D-cut steering wheel



Leather gear knob (Manual only)



Tinted glass



Privacy glass: rear door, quarter & tailgate



Front centre armrest

**EXTERIOR**

16" alloy wheels



18" diamond cut gunmetal alloy wheels



Piano black radiator grille



Fashion rails



Projection headlamps



Front & rear LED daytime running lights



Rear spoiler with LED stop lamp



Standard front fog lights



Triple LED front fog lights



Rear parking sensors



Front and rear parking sensors



Mini spare



Tyre repair kit



Tyre pressure monitoring system

[Exterior](#)[Interior
& connectivity](#)[Drivetrain](#)[Safety](#)[Models
& colours](#)[Equipment
& data](#)[Accessories](#)[Aftersales](#)

Special offers

Book a test drive

Find your local dealer

Build your Tivoli

Technical data

VENTURA 1.5 PETROL MANUAL		ULTIMATE 1.5 PETROL MANUAL		ULTIMATE PETROL AUTOMATIC	
ENGINE AND DRIVETRAIN					
Drivetrain	Front wheel drive				
Engine ccapacity (cc)	1497				
Engine configuration	4 cylinders				
Transmission	6 speed manual	6 speed manual		6 speed automatic	
Fuel	Petrol				
Exhaust system	Catalyst				
PERFORMANCE					
Top speed (mph)	112	112		109	
Maximum power (PS/rpm)	163/5500				
Maximum torque (Nm/rpm)	280/1500-4000	280/1500-4000		260/1500-4000	
Max unbraked trailer load (kg)	500				
Max braked trailer load (kg)	1000				
Towbar max load (kg)	60				
ECONOMY & EMISSIONS - WLTP*					
Regulated emission standard	Euro 6d				
CO2 emissions (g/km)	158	161		175	
Fuel consumption: combined mpg	40.5	40.1		36.9	
Fuel consumption: low mpg	33.9	32.9		29.0	
Fuel consumption: medium mpg	43.9	43.1		39.2	
Fuel consumption: high mpg	47.3	46.4		43.0	
Fuel consumption: extra high mpg	36.9	40.1		35.1	
MODEL		ULTIMATE 1.5 PETROL MANUAL		ULTIMATE 1.5 PETROL AUTOMATIC	
Wheels/Tyres	205/65 R16	215/50 R18		215/50 R18	
Insurance group	15D	20D		19D	

*Figures quoted for RDE 2 Vehicles

Exterior

Interior
& connectivity

Drivetrain

Safety

Models
& colours

Equipment
& data

Accessories

Aftersales



[Special offers](#)[Book a test drive](#)[Find your local dealer](#)[Build your Tivoli](#)

Dimensions

	TIVOLI 1.5 PETROL MANUAL		TIVOLI 1.5 PETROL MANUAL	TIVOLI PETROL AUTOMATIC
Length (mm)			4225	
Width (mm)			1810	
Height (mm)			1621	
Wheelbase (mm)			2600	
Track: front/rear (mm)			1555	
Min turning radius (M)			5.3	
Overhang: front/rear (mm)			880/745	
Gross vehicle weight (KG)	1745		1800	1820
Kerb weight (KG)	1369		1375	1393
Fuel tank (litres)			50	

RUNNING GEAR

Steering	Electronic power assisted rack and pinion		
Suspension (front/rear)	MacPherson strut/independent		
Brakes (front/rear)	Vented disc/solid disc		



1810mm



1555mm

1621mm



880mm

2600mm

745mm

4225mm

[Exterior](#)[Interior
& connectivity](#)[Drivetrain](#)[Safety](#)[Models
& colours](#)[Equipment
& data](#)[Accessories](#)[Aftersales](#)

[Special offers](#)[Book a test drive](#)[Find your local dealer](#)[Build your Tivoli](#)

Make your Tivoli unique

[Find out more here](#)

Pricing and info also available at nearest dealer



Dog guard



Plastic boot liner



Roof rack



Rubber mats



Detachable towbar



Wind deflector

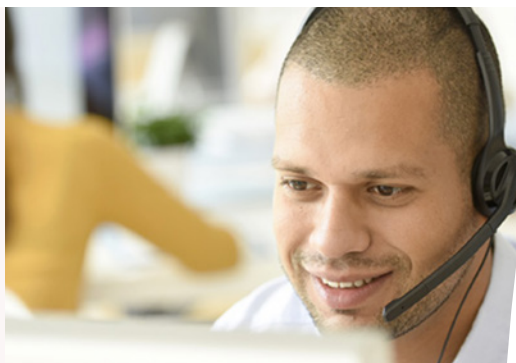
[Exterior](#)[Interior
& connectivity](#)[Drivetrain](#)[Safety](#)[Models
& colours](#)[Equipment
& data](#)[Accessories](#)[Aftersales](#)

[Special offers](#)[Book a test drive](#)[Find your local dealer](#)[Build your Tivoli](#)

SsangYong aftersales

Customer service

We care passionately about delivering outstanding customer service. Attention to detail is important, so any question you ask, we'll do our very best to answer it.



SsangYong assistance

All SsangYong new vehicles come with 12 months Roadside Assistance, providing you with the best level of customer care both in the UK and on Mainland Europe.



5-year warranty

It's reassuring to know that the Tivoli range comes with a 5-year / 100,000 mile warranty. It's a Korean thing. When we promise something, we stick to it. If something goes wrong and it's definitely our fault, we fix it. Our customers like it, and they tell other people about it. So everybody's happy.



3-Year Service Plans

We've got your Tivoli covered from £19.99* per month

A SsangYong service plan will help maintain the 5-year warranty, prolong vehicle life, sustain vehicle performance and aid trouble-free motoring - giving peace of mind at a manageable monthly cost.

A SsangYong service plan covers new vehicles from registration and covers the following:

- ✓ The vehicle's first 3 scheduled services
- ✓ The vehicle's first M.O.T
- ✓ 2 Years extended RAC roadside recovery

*Service plans run for 34 months on Tivoli. Petrol powertrain service intervals: 12 months or 10,000 miles - priced at £19.99 per month. Diesel powertrain service intervals: 12 months or 12,500 miles- priced at £23.99 per month.

[Exterior](#)[Interior
& connectivity](#)[Drivetrain](#)[Safety](#)[Models
& colours](#)[Equipment
& data](#)[Accessories](#)[Aftersales](#)

January 2023



For more information please call 0333 444 1954

The information in this brochure is not binding and is subject to alteration. Specific items described do not feature on every model – please check standard equipment listed on page 19-21. SsangYong reserves the right to change specifications at any time without notice. The colour and finishes reproduced in this brochure are subject to the limitations of the printing process and may vary from the actual colour and paint finish. This brochure does not constitute an offer of sale of any particular vehicle or specification. Please confirm exact specifications, prices and colour availability with your SsangYong dealer or check the SsangYong website.



SSANGYONG

5-YEAR WARRANTY

